


LÜTZE News

LÜTZE [®]
A U T O M A T I O N

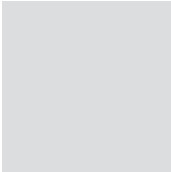
powered by Amphenol



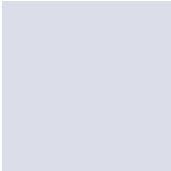
Efficiency in Automation



Over 65 Years of Tradition in Automation – With countless pioneering achievements and patents, the international LÜTZE Group is one of the leading companies in the automation industry.



LÜTZE produces and supplies highly efficient electronic and electrical components and system solutions for many industries. The comprehensive and well-coordinated product range creates valuable synergies for the user. The offering includes highly flexible cables and custom cable assemblies, the energy-efficient *AirSTREAM* wiring system for control cabinets, and intelligent Industry 4.0 solutions in the fields of interface technology, power monitoring, power supplies, and Ethernet infrastructure.



Cable Solutions

Reliable and highly flexible cables with UL approvals for the export-oriented machinery industry.



Connectivity Solutions

Plug & Play for industrial Ethernet, cable assemblies for servo drive systems, and EMC technology.



Cabinet Solutions

The complete system for thermal optimization of control cabinets with significant energy-saving potential.



Control Solutions

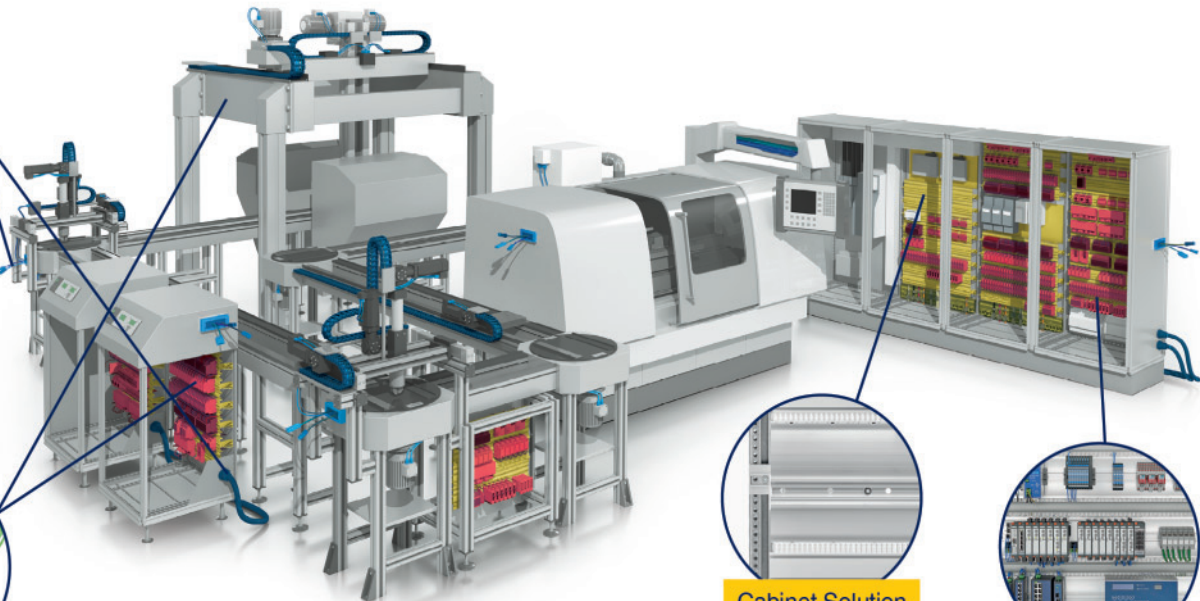
Intelligent power monitoring and supply, universal interface technology, and flexible enclosure systems.



Cable Solution



Connectivity Solution



Cabinet Solution



Control Solution

LÜTZE Group Acquired by Amphenol Corporation

The automation specialist Friedrich Lütze GmbH, the rail technology company Lütze Transportation GmbH, and all other companies of the international LÜTZE Group in Europe and China, were acquired by the U.S.-based Amphenol Corporation on October 1, 2024. The members of the LÜTZE Group in the USA, Lutze Inc. and Data Guide Cable Corporation, were successfully acquired in July 2024.

There will be no changes for customers and business partners due to the acquisition. The usual flexibility and customer proximity remain unchanged. The current contact persons, as well as the familiar company and production locations, including the headquarters in Weinstadt, will remain the same.

Further information and a FAQ section answering the most important questions can be found on the [LÜTZE corporate website](#).



Industries



Your partner for innovative solutions in various industries.

LÜTZE stands for excellence and innovation in the areas of Cable, Connectivity, Cabinet, and Control. With a broad product range that is perfectly coordinated, we serve many industries and offer tailored solutions for specific requirements.

LÜTZE Industry Expertise

- Waste and Recycling Industry
- Intralogistics, Lifting, and Conveying Technology
- Food Industry
- Plastics Industry
- Metal Industry
- Automotive and Vehicle Manufacturing
- Semiconductor Industry
- Medical Technology
- Water and Wastewater Industry
- Event Industry

Great Expertise and Experience

Our profound expertise, and many years of experience make us the ideal partner in your industry. Our products and solutions are developed and manufactured in-house, ensuring the highest quality and flexibility.

LCOS - LUNA



The intelligent control system.

LCOS-LUNA is a compact backplane with an integrated data and power bus. By simply plugging in function modules, such as LCOS power monitoring modules, compact applications can be set up without accessories and without additional wiring. This saves time, money, and increases your competitiveness. Push-in terminals enable tool-free setup.

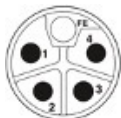
LEPOS

LEPOS – The Entry-Level Series

The LEPOS power supplies are a cost-optimized series for standard applications. In addition to a 1-phase basic series, a 1-phase performance series is available for more complex requirements. For global applications, the 2-phase wide-range series is the optimal choice. The 3-phase devices offer full power without compromise. All four series cover a power range from 120W to 960W and, due to their excellent technical features such as PowerBoost, efficiency, and derating, they are suitable for most IP20 applications.



M12 Power Connector



M12 - L cod
63V DC / 16A



M12 - T cod
63V DC / 12A



M12 - K cod
690V AC / 16A



M12 - S cod
690V AC / 12A

M12 Power

- Push-lock spring connection technology
- Cross-sections up to 2.5mm² (with ferrule)
- Variants in socket and plug, straight
- Codings: L, T, K, S
- Handle body material: Solid metal, nickel-plated
- Protection class: IP65
- Extended temperature range:
-40°C to 85°C

X-Coded Connectors



X-Coded Connectors

- Molded connection cable with X-coding Suitable for drag chains and torsion-proof ($\pm 180^\circ/\text{m}$)
- Jacket material: PUR
- Conductor cross-section 4x2xAWG26
- Available as plug and socket, both straight and angled
- 360° shielding
- Transmission characteristics: CAT 6A
- Data transmission rates 10 Gbit/s.

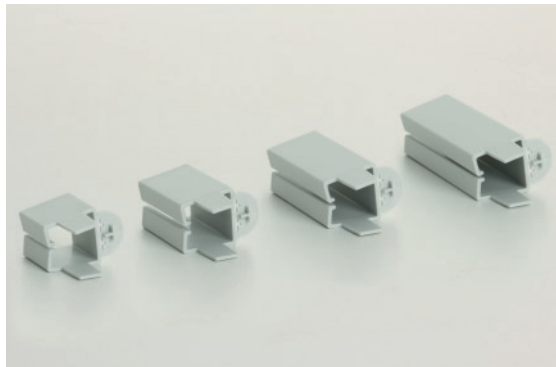
Support Insulation

Easy installation and time savings.

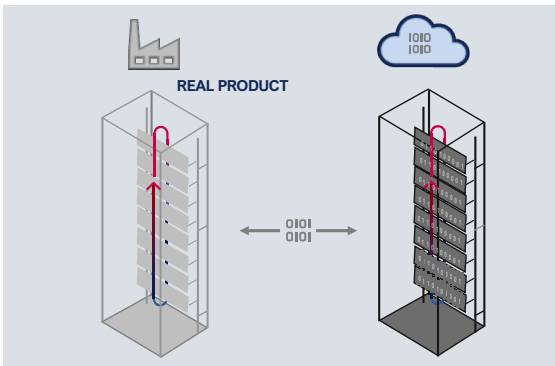
The new support insulations for the **AirSTREAM** wiring system serve as edge protection for the supports and provide double contact protection. They are used with the SR032 support rail and offer great advantages during the independent setup of **AirSTREAM** Compact frames, thanks to integrated mounting aids in the plastic insulation.

The insulations for the **AirSTREAM** supports are available in lengths of 20, 30, 40, and 50 mm. A special notch allows for easy installation without measuring in a 10-mm grid. Double-sided Lugs facilitate the shifting of the sliding nut in the sliding nut channel. The supports are held in position by the new insulation, preventing slipping or falling during assembly.

The support insulations can also be used with the RG020 support rail.



Overview of the Cabinet Digitization Strategy



Overview of the Cabinet Digitization Strategy

LÜTZE has long pursued a digitization strategy for smart solutions around the control cabinet. The latest solution is the new **AirSTREAM** Configurator. The completely redesigned online tool enables fast and easy frame construction at the CAD level, including offer calculation. Users can independently configure their **AirSTREAM** and **AirSTREAM** Compact frames with the new configurator, and then load them into the CAD tool used to design the control cabinet.

Further solutions of the LÜTZE digitization strategy for control cabinets can be found on the following pages and at our booth at SPS 2024:

- **AirTEMP** 2.0 – Temperature Simulation for Proper Control Cabinet Climate Design
- **AirTEMP** Controller and **AirTEMP** Monitor – Condition Monitoring at the control cabinet level

AirTEMP 2.0

AirTemp 2.0 – Control Cabinet Temperature Simulation with Adaptive Cooling Demand and Consumption Calculator

Given tight time constraints in control cabinet planning, and the need for detailed temperature calculations for each control cabinet according to DIN EN 61439, the latest update of *AirTEMP* 2.0 offers a time-saving and practical solution. In addition, resource-efficient control cabinet planning is supported by the new adaptive cooling demand and consumption calculator.

<https://airtemp.luetze.com>



Fraktion Lütze GmbH
Ruchensmühle 17 19 | D-71884 Albersweiler
Phone: +49 7151 60-534-0 | Email: info@luetze.de
September 26, 2024



Detailed results

| | | | |
|----------------|----------|------------------|----------|
| T back: | 48.14 °C | T front: | 48.58 °C |
| T upper back: | 48.26 °C | T upper front: | 48.58 °C |
| T middle back: | 48.14 °C | T middle front: | 48.58 °C |
| T lower back: | 48.01 °C | T lower front: | 48.29 °C |
| T top: | 48.66 °C | T bottom: | 48.04 °C |
| T mean: | 48.01 °C | Total heat flow: | 417.28 W |

Emissions

| Assumptions | Results | | |
|---------------------------|--------------|----------------------------------|-----------------------------|
| Rated cooling output: | 800.00 W | Min. needed cooling output: | 82.19 W |
| Cabinet operating hours: | 2000.00 h | Air conditioner operating hours: | 970.00 h |
| Min. ambient temperature: | 10.00 °C | Mean efficiency: | 1.11 |
| Max. ambient temperature: | 30.00 °C | Total energy consumption: | 189.68 kWh |
| Emission factor: | 424.00 g/kWh | Total emissions: | 79.64 kg CO ₂ eq |

± 10 % for recalculation at this amount in a week.

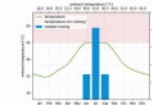


Figure 1: expected internal cabinet temperature throughout the year and, if needed, the cooling output required to prevent exceeding the target temperature.

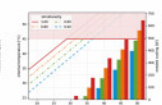


Figure 2: internal temperature and needed cooling output for increasing ambient temperatures at different circadian hours

Disclaimer of liability: The Fraktion Lütze GmbH cannot assume any liability for the entry of parameters, selection, interpretation and selection of devices. Information shown in the AirTEMP results page is based on our general experience and considered to be correct. It is subject to the best knowledge and will provide a guideline for the selection and use of different products related to control cabinet construction and tactics.

Condition Monitoring at Control Cabinet Level

AirTEMP Controller – Detailed condition monitoring of the control cabinet

Systems and production lines at the control cabinet level can be comprehensively monitored and optimized with the **AirTEMP** Controller. To increase efficiency, several connected control cabinets are thermally monitored by a single unit.

Thanks to the cloud-based solution, operators can access their systems in various production facilities and adjust parameters as needed—anytime, anywhere! Live temperature data is available via **AirTEMP** Monitor. Alerts are sent in the event of disturbances or overheating in the control cabinet. Reporting via email is also possible.



Article number 777200.0011

LÜTZE Solutions



Wide product portfolio and custom solutions.

In addition to the innovations presented in this brochure, we also offer numerous customized solutions for your industry. Active and personal advice is a matter of course for us. Together with you, we develop your individual solution to offer you continuous added value.

Our industry teams and our technical staff are always at your disposal. Please contact us. The concrete implementation of your individual solutions will then take place within the respective product areas.



LÜTZE
Industry Teams



■ High-tech for the village dairy



■ LÜTZE Lights Up Rio



■ AirSTREAM on the Test Bench



■ Green balance sheet for building automation



■ AirSTREAM on the crest of the wave



■ Duct-free wiring at this chemical giant's sites, worldwide



SkyBLUE

The Sustainability Initiative by LÜTZE

- Long-term success instead of short-term profit maximization through sustainable corporate and product policies
- Resource and energy-conscious production using durable and environmentally-friendly materials
- Strategies for conserving energy and resources through ecological and economic responsibility



Friedrich Lütze GmbH
Bruckwiesenstraße 17-19 • 71384 Weinstadt
messe@luetze.de • www.luetze.de

