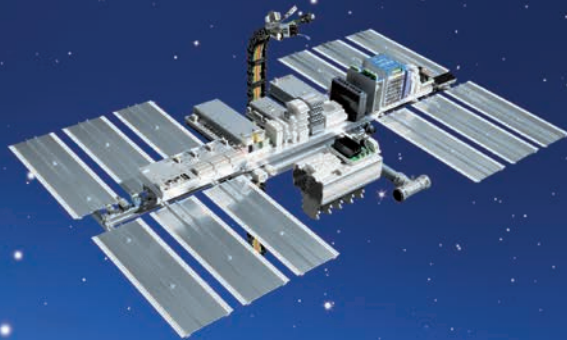


Efficiency in Automation

Cable • Connectivity • Cabinet • Control



News Hannover Messe 2018

23.-27. April

Hall 9 Stand D54



Efficiency in Automation

Efficiency in Automation: This statement reflects our entire company philosophy

As experienced specialists in Automation Technology with solutions for highly-flexible cables, cable manufacturing, interfaces, current monitoring and control cabinet wiring,

we have been focusing on efficiency for many years.

LÜTZE defines efficiency in the automation field as the use of sustainable products and solutions to further increase the performance of your plant.

This exhibition innovations flyer contains

many interesting examples of this. Join LÜTZE in **Halle 9 Stand D54**.

We are looking forward to your visit!

LÜTZE Sustainable Solutions Hall 9 Stand D54

LÜTZE *Sky*BLUE - Efficiency for environment

*Sky***BLUE**
LÜTZE



For further info about our
*Sky***BLUE**-campaign
<http://bit.ly/2BlgrLJ>

LÜTZE 
SYSTEMATIC TECHNOLOGY

Complete system for a better climate inside the control cabinet

LÜTZE's **AirSTREAM** is a complete system to optimise the thermal situation characteristics of the control cabinet modules.

Come to the LÜTZE stand and try out the **AirSTREAM Test + Simulation** to detect the various ways of reducing machine downtime and ensuring more energy efficiency in the control cabinet.

1. Recognising the problem:

- Hotspots and/or high power costs through the use of air conditioning
- Machine downtime
- Thermodynamic design considerations of the control cabinet



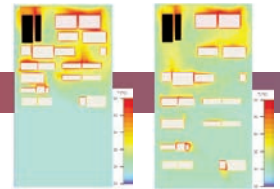
2. Discover differences:

- **AirTEMP** thermal simulation with different wiring types and cooling systems



3. Optimise:

- Thermally improved arrangement of the components
- Component density
- Component placement



AirSTREAM Test + Simulation

Less machine downtime and more energy efficiency

4. Climate inside the control cabinet:

- The use of the **AirBLOWER**
- Intelligent air guidance thanks to **AirBLADES**



5. Plan the control cabinet:

- Use of the free **AirSTREAM** online configurator



6. Find a solution:

- Longer lifecycle of the electrical components
- Power savings thanks to reduced energy requirements for air conditions
- Fewer machine downtimes
- Higher energy efficiency



Time laps!
How to solve Hotspots
with the **AirBLOWER**
<http://bit.ly/2mMBwuY>

LÜTZE *AirTEMP* and *AirBLOWER*

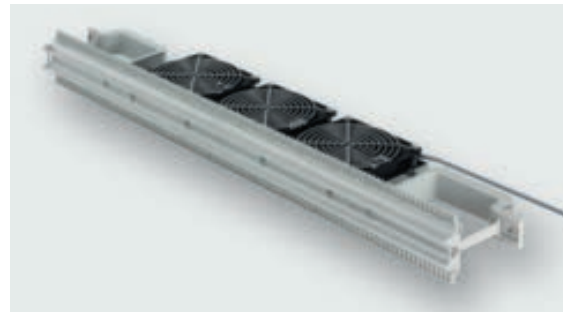


NEW! *AirTEMP* heat analysis tool for the control cabinet

It can be used to determine, quickly and easily, which temperatures and temperature layers can develop in a control cabinet.

NEW! *AirBLOWER*:

The new LÜTZE *AirBlower* for the *AirSTREAM* wiring system balances out the air layers in the control cabinet and achieves optimum heat dissipation.



***AirTEMP* heat calculation for the control cabinet:**
airtemp.luetze.com



Video: The improved design for better air circulation in the *AirSTREAM* system ensures a better ambient temperature in the control cabinet.
<http://bit.ly/2Evro6f>

More space in the control cabinet

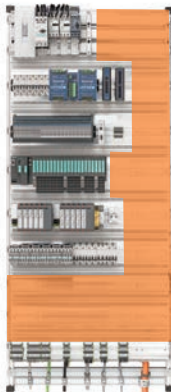
Simply more space!

You can mount all of your control components efficiently and integrate your wiring easily: no longer any need for cable trunking, no need for individually drilled holes or the chore of lining up the components.

Including reduced cabinet volume through optimised use of space.

AirSTREAM

Space saving



Conventional construction

Replacing the old with the new!

The new LSC **AirSTREAM** is compatible with the old LSC-B, even existing design plans can be used.

Efficient Cabinet Engineering with the **AirSTREAM** Online Configurator - Only 5 Steps to construct your **AirSTREAM** frame...:
<http://bit.ly/1ogxE3A>

SkyBLUE
LSC



More Space and more flexibility
in cabinet with LSC-AirSTREAM.
<http://bit.ly/1amJY4A>



NEW!
LSC online configurator.
<http://bit.ly/1ogxE3A>

LITZE 
SYSTEMATIC TECHNOLOGY

Power supply in the control cabinet 12 V to 72 V

Intelligent power supply 30 W to 2400 W

- System voltage 12 V to 72 V
- High efficiency up to > 94 %
- Compact design
- Can be freely configured
- Global approvals due to 1-/ 2-/ 3-phases



LCOS-PS



CPSB3-2400

Intelligent current control

- LOCC-Box and LCOS-CC
- 1 and 2 channel versions
- Adjustable current ranges and characteristics
- Energy management (remote access / fieldbus)
- Integration in fieldbus systems Profinet / EtherCAT / Ethernet IP



LOCC-Box



LCOS-CC



Industrial
Power
Supplies



Product Focus
Compact E



Product Focus
LOCC-Box



Product Focus
LOCC-Box ED

LCOS: Flexible housing system and components

LCOS - Empty housing

- Use housing as a standalone solution or as a modular I/O system
- Easy installation; jumper instead of wiring
- Universal connection technology
- 4-wire energy bus, e.g. 3-phase supply of 16A / conductor
- 12-pin data bus
- Central power supply
- 2 housing widths: 22.5 mm and 35 mm



Example
LCOS - System construction

LCOS - Switch

- AC/DC-supply voltage
- Can be used as a standalone module or in the LCOS system
- Universal application e.g. Profinet-IO (RT) and EtherCAT
- QoS, Auto Negotiation, Broadcast current protection
- Extended temperature range
- Compact design



LCOS Switch
4-Ports



LCOS Switch
8-Ports



Control Solutions - online or printed
www.luetze.com

Change and convert in a consistent design!

LCIS - Lütze Compact Interface Systems

- Compact Design 6.2 mm
- Low installation depth < 76 mm
- Innovative screw and push-in connection options
- Insulated jumper system for all options
- Unique terminal labelling
- Secure signal tracking due to 2 mm test opening
- Standard marker for universal labeling
- Versions with manual - 0 - automatic
- Universal application
- Approvals UL, CSA and DNV GL



Relay modules with 1 change over contact

- Standard and gold-plated contacts
- Closed and pluggable design

Solid State Relay (SSR)

- Switching currents, e.g. up to 10 A @ 30V

Signal converter:

- Standard signal converter
- Temperature converter
- Frequency converter
- Passive converter



More **Control** in the **LÜTZE Relays** catalogue
under www.luetze.com/downloads/

Great performance - 50 years LÜTZE SUPERFLEX®



LÜTZE supplies five high flexing cable models:

- Bus and network cables
- Motor, servo and feedback cables
- Control cables
- Electronic cables
- Actuator-sensor cables



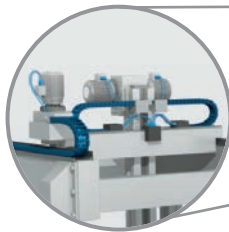
More **cable and accessories:**
Online catalogue - www.luetze.com

LÜTZE 
SYSTEMATIC TECHNOLOGY

Great performance - for your applications

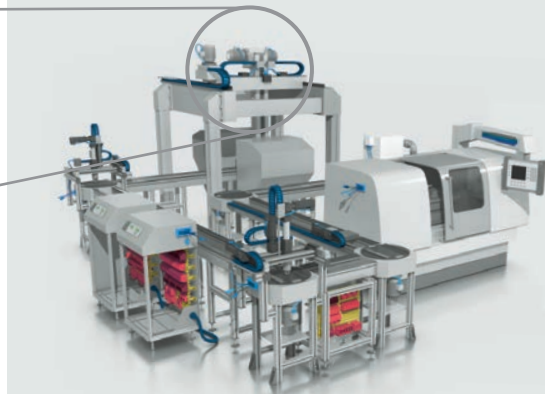


Around 1,500
LÜTZE cables and
wires for the
European and North
American markets
are now available in
the **ePLAN** Data
Portal.



95 % of all continuous moving applications can be covered by our cables.

This includes machine tools, handling equipment, system and device construction, transport and conveyor technology, and also robots.



More **cable and accessories:**
Online catalogue - www.luetze.com

Great performance - new Ethernet Cat6_A for the C-track



LÜTZE Bus and network cables



Bus cables for wiring all common industrial systems.

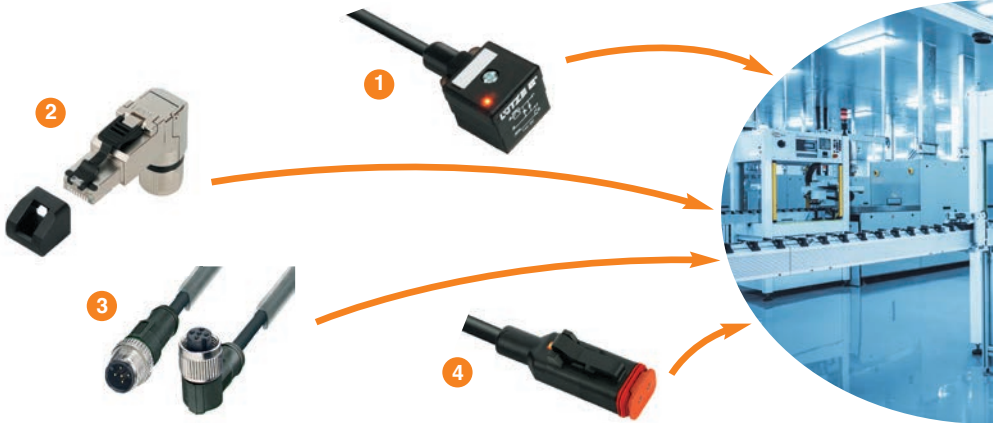


New:
Ethernet for the continuous moving application up to **Cat6_A**.



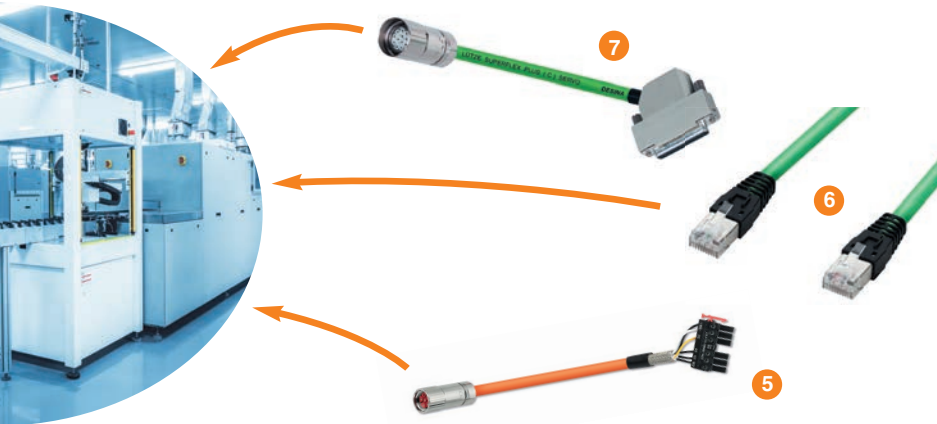
LÜTZE Connectivity Solutions

- 1 Suppressors for valves
- 2 Profinet RJ45 connector
- 3 Actuator Sensor Interface
- 4 Suppressors for valves
- 5 Servo Power cable
- 6 Ethernet cable with an RJ45 connector
- 7 Servo Feedback



Competence in Cables - online or printed:
www.luetze.com

Solutions from one source



LÜTZE supplies the 'all-round carefree package' from one source for your systems and machines. Cable assemblies for servo drive systems, suppression technology, connectors and industrial ethernet.



File E486936
ZPFW2 / ZPFW8



More **Connectivity** solutions:
Online catalogue - www.luetze.com

LÜTZE 
SYSTEMATIC TECHNOLOGY

Plug & Play in Industrial Ethernet

Save time, money and stress:

An important requirement for the right selection of cables, connection technology and components. Whether it is a standard or special application, a drag chain or torsional movement, LÜTZE supplies the tailor-made solution.



More **Connectivity solutions:**
Online catalogue - www.luetze.com

Time saving with M12 connectors

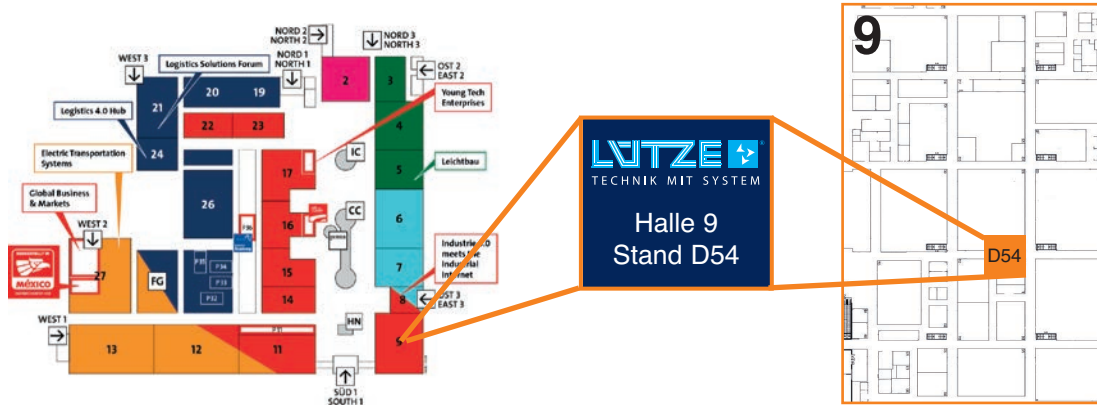


- Compact design M12
- Simple push-in connection technology
- - 30 % time saving as screw clamp terminals
- male / female
- A coded (CAN)
- B coded (Profibus)
- D coded (Ethernet, Profinet)
- Design: male straight and angled
- Installation: Coding can be rotated in 45° increments
- Protection class IP65, IP67 in screwed condition



More **Connectivity solutions:**
Online catalogue - www.luetze.com

Hall plan



LÜTZE Solutions Hall 9 Stand D54

My fair schedule

**Don't forget to try
Maultaschen at LÜTZE!
(Swabian Ravioli)
We look forward to your visit!**

Hall 9 Stand D54:
Win an **iPad mini** and many more
instant prizes to take home!



Free tickets or an appointment
at the booth for technical advise
at hmi@luetze.de

Hotline Cable Solutions: +49 7151 6053-222
Hotline Interface Solutions: +49 7151 6053-282

Friedrich Lütze GmbH
Tel.: +49 7151 6053-0
info@luetze.de • www.luetze.com

LÜTZE 
SYSTEMATIC TECHNOLOGY