



Making the right industrial ethernet connection



In today's industrial automation systems ethernet plays a major part. The networks rely on data being passed through the system at high rates to underpin the performance of the network.

The digital performance of a network is subject to the active devices within the networks such as switches and controllers - but it is the passive devices such as cable and connectors which can ultimately determine a networks performance.

1 Protocol

Select the protocol you are using and follow the steps below as a guide to using our selection table.

2 Construction

How many pairs are required for your application?

3 Gauge

What is the conductor size and construction stranding you require?

4 Static, Dynamic or both?

Do you require the cable for static or continuously moving applications ie in C-Track?

5 UL approved

All Lütze ethernet cables carry UL approval either or in most cases both.

** indicates UR approval only.*

6 Straight or Angled, RJ45 or M12?

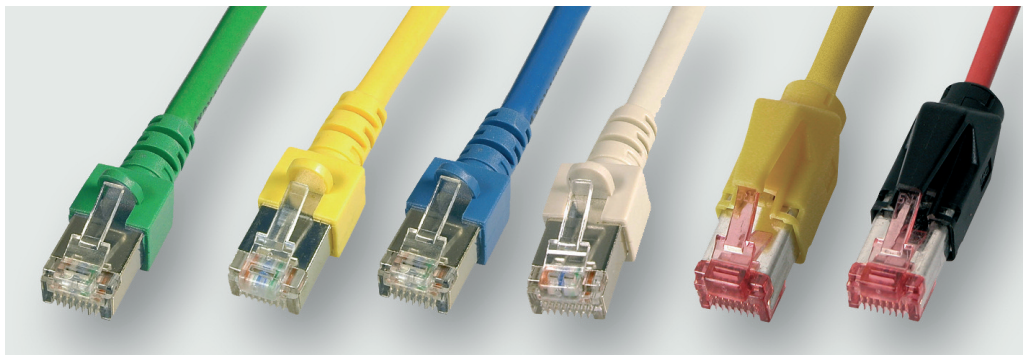
If connectors are required, select from right-angled, straight or M12-D or X coded

PAIRS		2 PAIR			4 PAIR	2 PAIR			2 PAIR						
CATEGORY		CAT6A			CAT5	CAT5E		CAT5			CAT5E	CAT6A			
AWG SIZE/STRANDING		A	B	C											
CABLE	C-TRACK		104303	104302			104303	104302	104379*		104303	104302	104337*	104347	
	STATIC	104301	104307		104397	104301	104307				104301	104307		104336	104397
CONNECTORS	RJ45 T568B Straight	490177	490177	490177	490128	490128	490128	490128		490128	490128	490128	490128	490128	
	RJ45 T568B 90° Angled	490178	490178	490178	490151	490151	490151	490151		490151	490151	490151	490151	490151	
	RJ45 T568A Straight				490129	490129	490129	490129	490138	490129	490129	490129	490129	450152	490129
	RJ45 T568A 90° Angled				490152	490152	490152	490152	490153	490152	490152	490152	490152	450152	490152
	M12 D CODED					490074	490074	490074	490074	490074	490074	490074	490074		
	M12 X CODED	490167	490167	490167	490167										

** indicates UR approval only.*

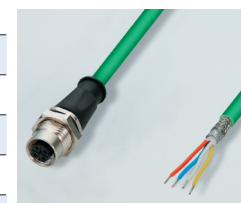
PAIRS		2 PAIR						4 PAIR								
CATEGORY		CAT5			CAT5E			CAT5E			CAT6			CAT6A		
AWG SIZE/STRANDING		AWG22/1	AWG22/7	AWG22/19	AWG26/19	AWG24/19	AWG24/7	AWG26/7	AWG26/19	AWG26/19	AWG22/1	AWG26/7	AWG26/7	AWG26/7	AWG24/7	
CABLE	C-TRACK		104303	104302	104379*	104337*			104336	104335			104396*	104347*		
	STATIC	104301	104307								104397	104338	104331		104401	
CONNECTORS	RJ45 T568B Straight	490128	490128	490128		490128	490128				490128					
	RJ45 T568B 90° Angled	490151	490151	490151		490151	490151				490151					
	RJ45 T568A Straight	490129	490129	490129	490138	490129	490129	490138	490138	490138	490129	490138	490138	490138		
	RJ45 T568A 90° Angled	490152	490152	490152	490153	490152	490152	490153	490153	490153	490152	490153	490153	490153		
	M12 D CODED	490074	490074	490074	490074											
	M12 X CODED	450167	450167	450167	450167	490167	490167	490167	490167	490167	490167	450167	490167	490167	490167	

** indicates UR approval only.*



Description	Part No
PATCHCABLE 0,5M GREEN	192030.0050
PATCH CABLE 1,0M GREEN	192030.0100
PATCH CABLE 2,0M GREEN	192030.0200
PATCH CABLE 3,0M GREEN	192030.0300
PATCH CABLE 5,0M GREEN	192030.0500
PATCH CABLE 10,0M GREEN	192030.1000
PATCH CABLE 15,0M GREEN	192030.1500
PATCH CABLE 20,0M GREEN	192030.2000
Other colours available on request	

Description	Part No
M12 to RJ45 Superflex Profinet PUR cable 0.3M	192013.0030
M12 to RJ45 Superflex Profinet PUR cable 1M	192013.0100
M12 to RJ45 Superflex Profinet PUR cable 2M	192013.0200
M12 to RJ45 Profinet PVC cable 0.3M	192014.0030
M12 to RJ45 Profinet PVC cable 1M	192014.0100
M12 to RJ45 Profinet PVC cable 2M	192014.0200
RJ45 to RJ45 Superflex Profinet PUR cable 0.3M	192015.0030
RJ45 to RJ45 Superflex Profinet PUR cable 1M	192015.0100
RJ45 to RJ45 Superflex Profinet PUR cable 2M	192015.0200
RJ45 to RJ45 Profinet PVC cable 0.3M	192016.0030
RJ45 to RJ45 Profinet PVC cable 1M	192016.0100
RJ45 to RJ45 Profinet PVC cable 2M	192016.0200
RJ45 to RJ45 Superflex Ethernet PUR cable 0.3M	192017.0030
RJ45 to RJ45 Superflex Ethernet PUR cable 1M	192017.0100
RJ45 to RJ45 Superflex Ethernet PUR cable 2M	192017.0200
RJ45 to RJ45 Ethernet PVC cable 0.3M	192018.0030
RJ45 to RJ45 Ethernet PVC cable 1M	192018.0100
RJ45 to RJ45 Ethernet PVC cable 2M	192018.0200
M12 D Coded Male Profinet/ Ethernet connector PUR cable to open end, 2M	475300.0200
M12 D Coded Male Profinet/ Ethernet connector PUR cable to open end, 5M	475300.0500
M12 D Coded FEMALE Profinet/ Ethernet Panel connector PUR cable to open end, 2M	475500.0200
M12 D Coded FEMALE Profinet/ Ethernet Panel connector PUR cable to open end, 5M	475500.0500
M12 D Coded Male to Male Jumper cable Profinet/ Ethernet, PUR cable 0.3M	475400.0030
M12 D Coded Male to Male Jumper cable Profinet/ Ethernet, PUR cable 1M	475400.0100
M12 D Coded Male to Male Jumper cable Profinet/ Ethernet, PUR cable 2M	475400.0200
M12 D Coded Male to Male Jumper cable Profinet/ Ethernet, PUR cable 5M	475400.0500





Description	Part No
Cat5e 22.5mm shielded RJ45 panel entry	492075
Cat6 22.5mm shielded RJ45 panel entry	491075



Description	Part No
Cat6 RJ45 8pol. Cat.6A	490166



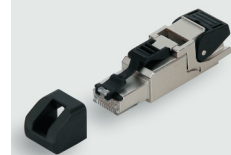
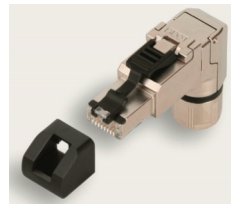
Description	Part No
M12 female D-code 4-pole to RJ45	490105
M12 female D-code 4-pole to RJ45	490106



Description	Part No
Ethernet PVC Cat5e (4x2x26awg/7StC)	104335
Ethernet PVC Cat5e (4x2x24awg/7StC)	104336
Ethernet PVC Cat6a (4x2x26awg/7)StC)	104338
Ethernet PUR Cat5e "Superflex" (4x2x26awg/19StC)	104396
Ethernet PUR Cat5e "Superflex" (4x2x24awg/19StC)	104337
Ethernet PUR Cat6a "Superflex" (4x2x26awg/19StC)	104347
Ethernet PUR Cat5e "Superflex" (2x2x22awg/7)StC)	104302
Profinet Type A (2x2x22awg/1)StC)	104301
Profinet Type B (2x2x22awg/7)StC)	104307
Profinet Type C "Superflex" (2x2x22awg/7)StC)	104303



Description	Part No
Shielded M12 5-pole male straight connector B-code, Suitable for Profibus/InterBus	490072
Shielded M12 5-pole female straight connector B-code, suitable for Profibus/InterBus	490073
Shielded M12 4-pole male straight connector D-code, suitable for 2-pair Ethernet/Profinet	490074
M12 X Coded Male Suitable 4-pair Gigabit Ethernet/ Profinet	490167



Description	Part No
Cat6A RJ45 T568B Straight IDC Rewireable Suitable for AWG 24/1,22/1, 27/7, 22/7	490128
Cat6A RJ45 T568B 90deg IDC Rewireable Suitable for AWG 24/1,22/1, 27/7, 22/7	490151
Cat6A RJ45 T568B Straight IDC Rewireable Suitable for AWG 26/1,26/7, 26/19	490138
Cat6A RJ45 T568B 90deg IDC Rewireable Suitable for AWG 26/1,26/7, 26/19	490153
Profinet RJ45 4 Pole Straight IDC Rewireable Suitable for AWG 24/1-22/1, AWG 27/7-22/7, AWG 24/19-22/19	490177
Profinet RJ45 4 Pole 90 deg IDC Rewireable Suitable for AWG 24/1-22/1, AWG 27/7-22/7, AWG 24/19-22/19	490178