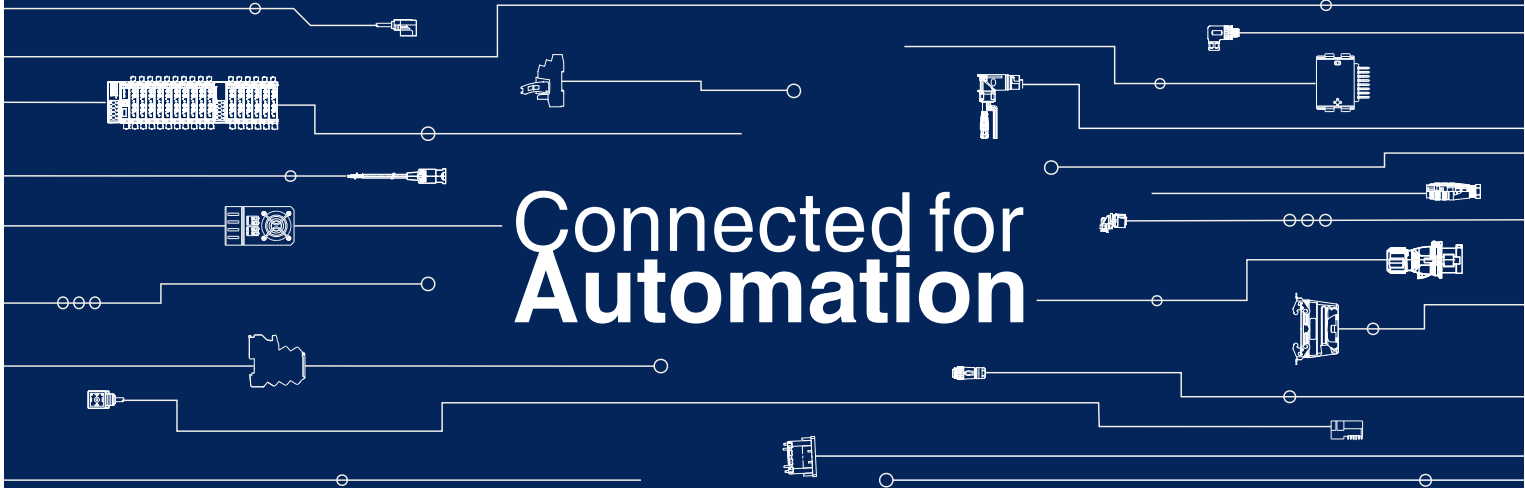


**NEWS**  
2025/2026



# Connected for Automation



# Connected for Automation

Friedrich Lütze GmbH, Amphenol Tuchel Industrial GmbH, Amphenol LTW Technology Co., Ltd., and CONEC Elektronische Bauelemente GmbH will be presenting their combined expertise at SPS 2025 in Nuremberg, Germany, sharing a joint exhibition presence for the first time.

Guided by the slogan “Connected for Automation”, the brands will display their comprehensive portfolio of electrical and electronic interconnect solutions as well as innovative systems for industrial automation.

The portfolio includes a wide range of connector technology, network infrastructure, pre-assembled cable systems, high flexing cables, modular control cabinet wiring systems, power supplies, and intelligent current monitoring solutions.

Through the close integration of these technologies, scalable and application-oriented solutions are created — enabling engineers and system designers to achieve greater efficiency and depth of integration in their machine and plant concepts.



# Friedrich Lütze GmbH

A tradition in automation for over 65 years - With ground-breaking innovations and international patents, LÜTZE is today one of the leading companies in automation industry worldwide. LÜTZE manufactures and supplies highly efficient electronic and electrical components and system solutions for a wide range of industries.

Our comprehensive supply program is optimally harmonized to meet all your needs. Our product portfolio consists of industrial cables and cable assemblies to energy efficient **AirSTREAM** wiring systems, interface and suppression technology, current control, power supplies and field bus technology up to Ethernet infrastructure.

LÜTZE is represented worldwide with sales companies in Europe, Asia, and the USA, as well as numerous distribution partners, ensuring close customer proximity in all markets.

## Cable Solutions

Reliable and highly flexible cables with UL approvals for the export-oriented machinery industry.

## Connectivity Solutions

Plug & Play for industrial Ethernet, cable assemblies for servo drive systems, and EMC technology.

## Cabinet Solutions

The complete system for thermal optimization of control cabinets with significant energy-saving potential.

## Control Solutions

Intelligent power monitoring and supply, universal interface technology, and flexible enclosure systems.



Cable Solution



Connectivity Solution

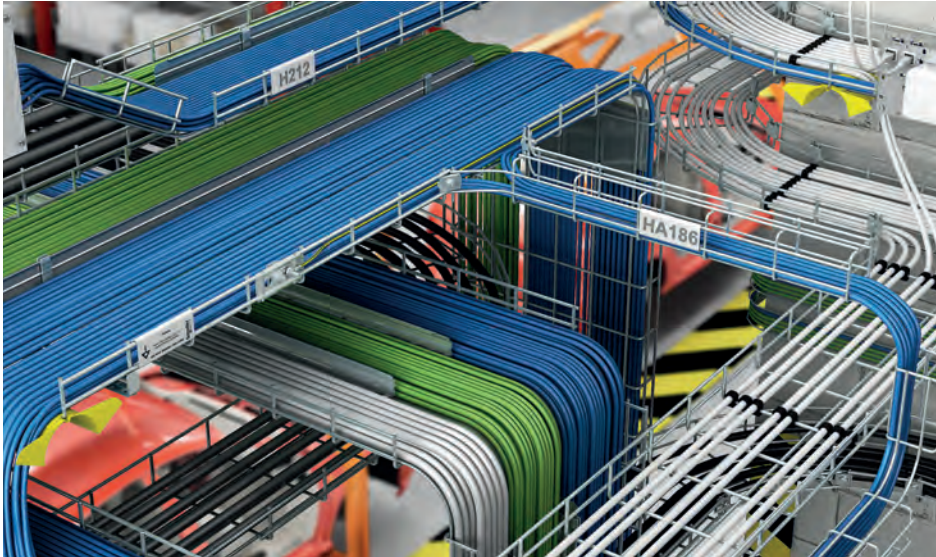


Cabinet Solution



Control Solution

# Wibe cable trays and tray cables



Wibe offers a wide range of cable trays with robust corrosion protection, available in galvanized steel, stainless steel, and other corrosion-resistant materials.

The open mesh design allows for flexible installation, optimized cable routing, and easy inspection and retrofitting.

Tray cables are TC-ER rated for open wiring between the cable tray and the machine. They are UL listed, approved for use in hazardous areas (Class I, Div. 2 according to NEC), and enable simple, cost-effective installation without enclosed cable systems. In addition, they are rated for up to 90 °C and 0.6/1 kV operation.

# LEPOS

LÜTZE LEPOS Low Power power supplies combine high flexibility with efficient performance. They cover a power range from 20 to 96 W and, thanks to automatic AC 115/230 V switching, can be used worldwide. With an efficiency of up to 88%, they meet modern energy efficiency requirements.

A power boost of up to 150% ensures reliable handling of short-term load peaks, while comprehensive protective features – including short-circuit limitation, overload protection, and DC monitoring with potential-free contacts and a DC OK LED – guarantee safe operation.

Compact housing and the option for parallel or redundancy operation make these devices ideal for space-critical applications.



# Cable Glands

LÜTZE cable glands are characterized by their versatile range of applications – from standard uses to specialized industrial environments.

Thanks to their high-quality materials, they are ideally suited for demanding conditions, ensuring long service life and maximum mechanical strength.

In addition, they offer excellent sealing performance and reliable strain relief, providing safe and durable operation.



# Harmonized Cables

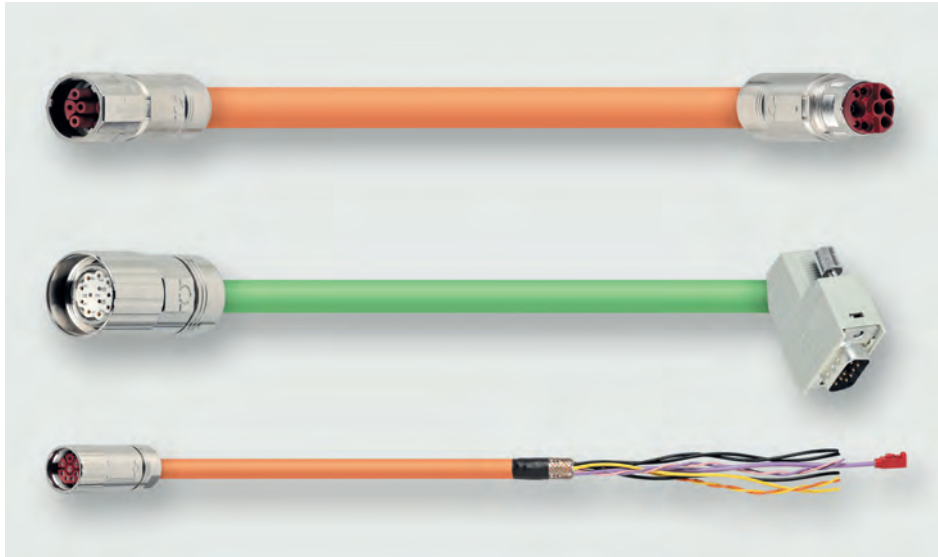
The new harmonized cables from LÜTZE are approved for use throughout Europe and are suitable for installation in dry, damp, and wet environments as well as outdoors.

The H05BQ-F and H07BQ-F types are designed for high mechanical stress and are resistant to oils, fats, gasoline, water, and weather influences. They also offer high flexibility at low temperatures and excellent tear and cut resistance.

The H07RN-F type is a heavy-duty rubber cable for medium mechanical stress and is characterized by its excellent resistance to oil, UV radiation, and ozone.



# SEW Servo Cable Assemblies



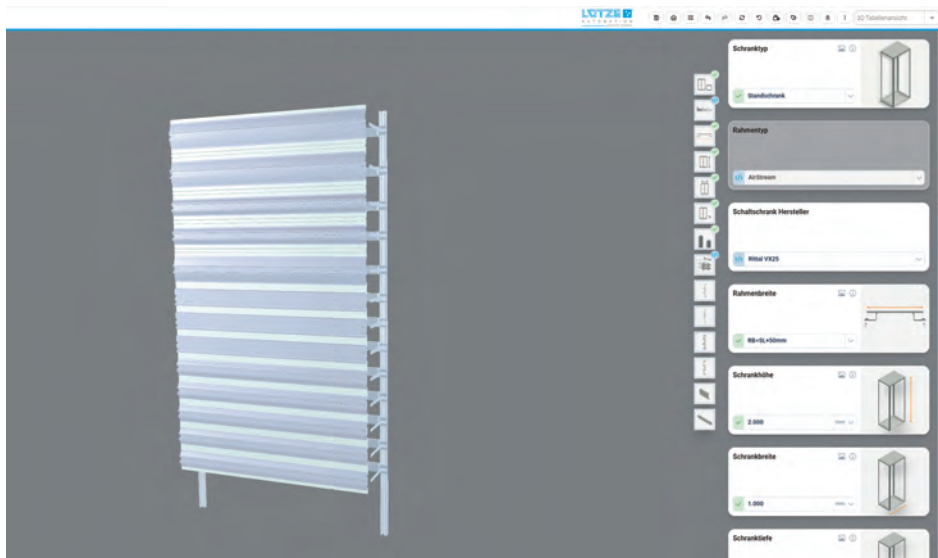
## SEW Servo Cable Assemblies

The new LÜTZE SEW servo cable assemblies offer flexible connection solutions for servo drives – either with One Cable Technology or with separate motor and feedback cables.

Rugged connectors and drag chain-compatible cables ensure high reliability, even under demanding operating conditions.

The cable assemblies have short lead times with a minimum order quantity of one and can be ordered in 1-meter increments.

# AirSTREAM Configurator



The new **AirSTREAM** Control Cabinet Configurator is a free online tool for the efficient design and optimized configuration of control cabinets.

The configurator enables precise planning of LÜTZE's **AirSTREAM** and **AirSTREAM** Compact wiring systems for any cabinet geometry, combining needs-based layouts with real-time pricing and CAD-compatible 3D export functionality.

Amphenol is one of the leading manufacturers in the field of electrical connection technology and employs more than 140,000 people in over 50 countries.

As part of this group, Amphenol Tuchel Industrial GmbH (ATI) in Heilbronn offers the advantages of an economically sound medium-sized company while at the same time being anchored within a modern, international "global player" with branches all over the world.



AGV / AMR



Power Distribution  
and Supply



Cabinet &  
Rack Interfaces



**Servo Drives**



**Stationary  
Robotics**



**Sensor &  
Measurement**

Amphenol Tuchel Industrial GmbH employs around 500 people worldwide, including in Europe, China, and the USA. Our independent global presence in terms of development, production, logistics and sales enables us to offer our customers special technical solutions and optimum service. Long-standing successful partnerships with our customers also characterize us.

Our innovative connector solutions and cable assemblies are used in applications such as automation and electromobility, as well as in agricultural and construction machinery and charging infrastructure.

Our creative developments set standards, determine market trends, and ensure a comprehensive product range for various markets.

# AMI

Amphenol Material Intelligence

**FIND  
YOUR  
MATE**

With our new Amphenol Material Intelligence (AMI), we are transforming the way you search for products:

Find the ideal connector in seconds – precisely matched individual technical requirements and optimized in price for desired quantity.

AMI is the new digital tool for instantly identifying the right connector. Instead of browsing catalogs or scanning through complex tables, simply enter technical requirements – AMI takes care of the rest. The tool presents you with the best options based on price and technical compatibility and automatically generates a bill of materials (BOM) tailored to individual needs.

This enables to make confident decisions, save time during product selection, and reach goals faster.



Use AMI – and find the best product for your application.

# signallmate® M16 Quicklock



## Extension of the IP69K Plastic Series

The Quicklock series complements Amphenol Tuchel Industrial's M16 portfolio with a cost-effective plastic version featuring a quick-lock mechanism. The product family now includes both overmolded and field-installable cable and coupling connectors, as well as matching receptacles in three variants. The series is particularly suitable for signal transmission in measurement technology and for powering smaller motors used outdoors.

The connectors are not only especially compact but also meet protection classes IP67/IP69K and typical UV resistance requirements.

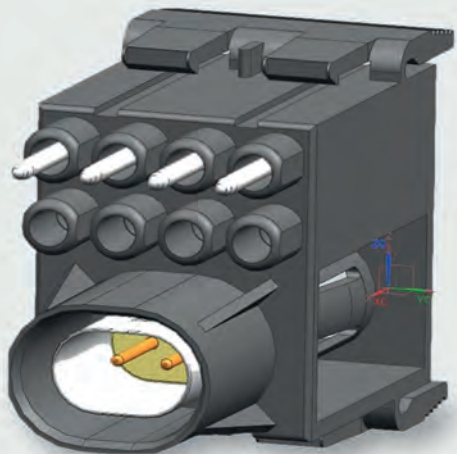
# ecolmate® RM Hybrid

## New 3+10 hybrid layout for DC drives

The ecolmate® Rugged Metal series with bayonet locking is known for its robust design and high vibration resistance. For this reason, the connectors are widely used in construction and agricultural machinery, as well as in factory automation — for example, as a power interface for stationary robots. The new hybrid contact arrangement with 2+PE for power and 10 signal contacts provides the ideal connection solution for DC applications and decentralized drives. This new contact layout joins a range of many other available configurations that can be used with the waterproof connectors.



# heavylmate<sup>®</sup> SPE



## Single Pair Ethernet interfaces within modular systems

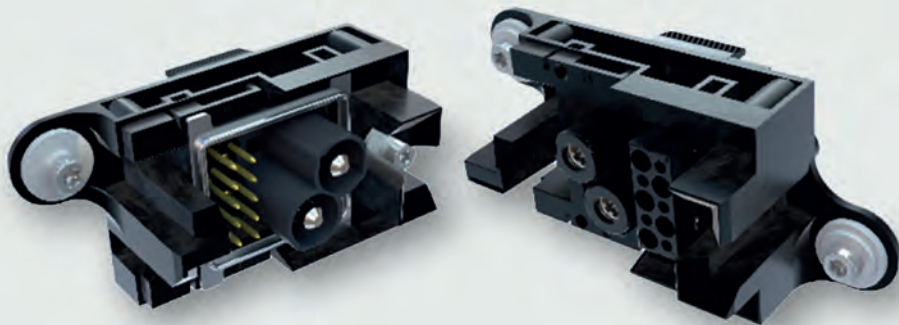
Data transmission via “Single Pair Ethernet” is already standard in automotive applications and agricultural machinery today. In the field of factory automation, this innovative and resource-efficient technology is expected to gain significant importance mid term. While the market mainly focuses on M12 standard interfaces, Amphenol Tuchel Industrial offers a suitable module for integration into rectangular connectors - ideal for control cabinet connections or field-level distribution. The connection complies with IEEE 802.3bp / 1000Base-T1 specifications, and the Ethernet cable shielding can be connected.

# energylmate® 100k

## Charging systems with up to 100.000 mating cycles

The energylmate® blind-mating system is ideally suited for the electrical connection of portable batteries, but it is also used in mobile robots and shuttle applications. The modular system, available with 3 or 5 module slots, enables a charging interface that can be individually expanded with signal and data transmission.

With an optimized frame and special contact technology, the system - when equipped with selected modules - is designed for over 100,000 mating cycles without the need for replacements. A tolerance compensation of up to 10 mm in the X and Y directions remains possible.



# IEC 60309 Connectors



## Industrial plugs & sockets for F&B

The IEC 60309 connectors of the tough&safe series from Amphenol Tuchel Industrial are now certified according to NSF standards and can be confidently used in the Food & Beverage sector. The plastics used have been approved, and material safety has been validated. No harmful chemicals can come into contact with food, and the connectors are designed to be dishwasher-safe for commercial use. In addition to the connectors, Amphenol also offers distribution boxes and standard cables.





# CONEC Elektronische Bauelemente GmbH

For over 40 years, **CONEC Elektronische Bauelemente GmbH** has been known for innovation, quality, and precision in connectivity technology. As a specialist in connectors, connection and cable assemblies, customized enclosure solutions, and IO systems, CONEC delivers versatile, flexible, and high-performance solutions for demanding applications worldwide.

Alongside a wide range of connectivity solutions, we offer specialized expertise in the integrated overmolding of components and assemblies, as well as in developing application-specific solutions tailored precisely to our customers' requirements.

As part of the globally operating **Amphenol Group**, CONEC combines international strength with the agility of a medium-sized enterprise.



# Flexible connections Across all industries

## Versatile | Innovative | Reliable

CONEC provides solutions for customers in the automation technology, industrial electronics, aerospace, telecommunications, energy technology, as well as mechanical engineering, mobile automation and transportation segments.

With locations in Canada, China, the Czech Republic, Slovakia, and Mexico, CONEC maintains a strong global presence.

Our quality management system, certified to DIN EN ISO 9001, ensures consistently high product quality worldwide.



Automation

Robotics

Mobile automation



Mechanical engineering

Aviation

IT & Data centers



Energy technology

Medical technology

Transportation



## EVERYTHING FROM A SINGLE SOURCE

As a full-range supplier in the field of Sensor-Actuator Cables (SAL), CONEC provides everything required for reliable transmission of signals, data, and power.

We're not just specialists in circular connectors — we provide a comprehensive portfolio of innovative solutions for a wide range of applications. With our expertise and commitment to quality, we also support you across the following areas of connection technology.

- I/O systems – active & passive junction boxes (NEW)
- Hybrid connectors
- IP67 connectors for harsh industrial environments
- Heavy equipment connectors for mobile automation
- D-SUB & IP67 D-SUB connectors
- Customized solutions

# Active & passive junction boxes



—> read  
more

Choose from passive I/O boxes for simple signal distribution or active versions with integrated electronics for advanced functionality.

Our active distribution boxes enable direct and efficient connection to controllers via common communication protocols such as PROFINET, EtherCAT, and IO-Link, and can be seamlessly integrated into existing automation environments.

CONEC also provides the appropriate connectivity technology – from various distribution systems to custom-assembled connection cables.



EtherCAT 

 IO-Link





Friedrich Lütze GmbH  
Bruckwiesenstraße 17-19 • 71384 Weinstadt  
[messe@luetze.de](mailto:messe@luetze.de) • [www.luetze.de](http://www.luetze.de)



Amphenol Tuchel Industrial GmbH  
August-Häusser-Strasse 10 • 74080 Heilbronn  
[industrial@amphenol.de](mailto:industrial@amphenol.de) • [www.amphenol-industrial.de](http://www.amphenol-industrial.de)



CONEC Elektronische Bauelemente GmbH  
Ostenfeldmark 16 • 59557 Lippstadt  
[info@conec.de](mailto:info@conec.de) • [www.conec.com](http://www.conec.com)